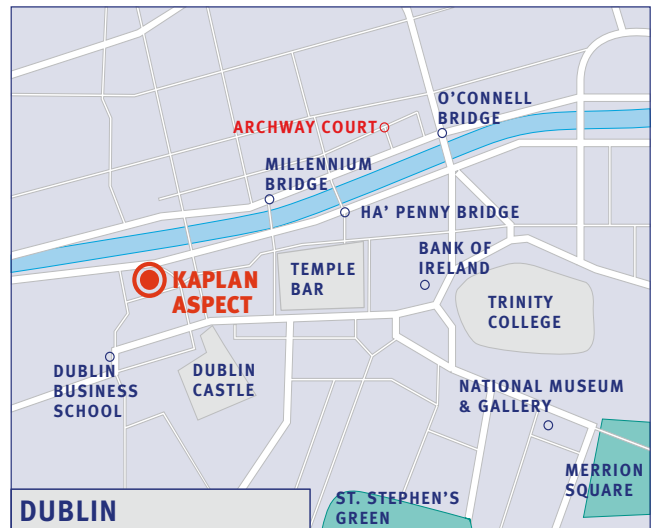


# Student Apartment Dublin

## Archway Court

The Archway Court apartments are located on the North side of the City Centre, approximately 15-20 minutes' walk from the school and 5 minutes from the main shopping areas of Henry Street and O'Connell Street. The apartments are located in buildings grouped around a courtyard, which is set back from the road and is entered via a secure gate on Mountjoy Street.



Archway Court  
39A Mountjoy Street  
Dublin 1



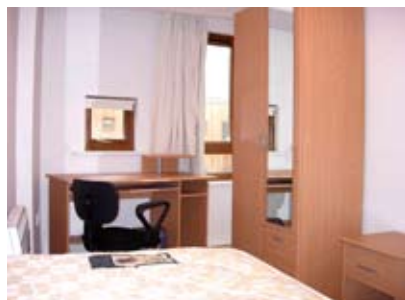
Archway Court

## Student Apartment Archway Court Dublin

**KAPLAN** Aspect



The courtyard of Archway Court



A single bedroom in one of the apartments



Communal living area



Shared kitchen

### Accommodation details

#### Type of accommodation

There are 40 single bedrooms arranged in 3 apartments of 6 single rooms and 6 apartments of 4 single rooms. Each apartment has a communal kitchen/lounge and shared bathroom facilities.

#### Meals

Self-catering. The modern shared kitchen is fully equipped so students can prepare their own meals.

#### Kitchen

The fully-fitted and equipped kitchen is of a very modern design with dishwasher, fridge/freezer, microwave, toaster and kettle. Crockery, cutlery and cooking utensils are also provided.

#### Rooms

Each room consists of a single bed, a wardrobe, desk and chair.

#### Common room

There is a comfortable common room/dining room with TV/DVD player in each apartment.

#### Deposit

A security deposit of €200 is required.

#### Bathrooms

There are 2 bathrooms and one additional toilet in each apartment.

#### Utilities

Electricity, gas and water are included in the accommodation fee. The electrical voltage is 240 volts. Students from some countries will require a transformer or adaptor.

#### Internet and phone

There is no telephone facility at Archway Court. A private call facility is available one minute's walk from the apartments. There are internet hotspots in each room for students with their own laptops.

#### Laundry

There are token-operated washers and dryers located on site. One load of washing or drying costs €3.

#### Security and keys

Electronic front door and bedroom door keys will be provided.

#### Linen and towels

Towels and bed linen are provided by the residential officer. Students are responsible for washing their own linen and towels.

#### Visitors

No unaccompanied visitors are allowed into the apartments. Visitors are to leave by 11pm. No visitors are permitted to stay overnight.

#### Noise and restrictions

Students are requested to be considerate toward their neighbours and keep noise levels to a minimum especially after 10pm.

#### Arrival and departure

Arrival must be on a Saturday or Sunday between 2pm and 10.30pm. Departure must be on a Saturday between 10am and midday.

#### Availability

Archway Court is available from October 2008 to June 2009 for students aged 18 and older. Please check availability.