

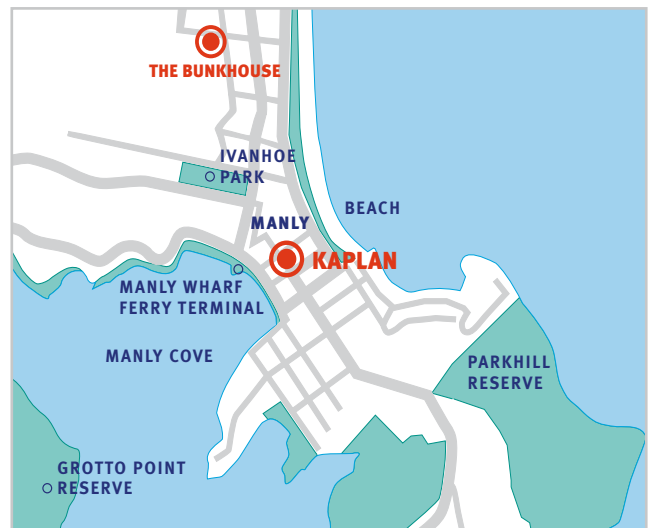
Student Hostel Sydney Manly

The Bunkhouse Manly

The Bunkhouse is a budget backpacker hostel is situated in the heart of Manly on Sydney's Northern beaches. The Bunkhouse provides cheap accommodation even for students on a tight budget.

Each room has its own shower, toilet, kitchenette and television. Experienced staff and competitive rates make the Bunkhouse affordable accommodation for discerning travellers. The Bunkhouse has a clean, relaxed and friendly atmosphere, with a large common room, commercial kitchen and an outdoor courtyard with BBQ facilities available.

The Bunkhouse Manly is located only metres from one of Sydney's finest beaches and a short walk from Manly ferry and Sydney harbour. Kaplan International College Sydney Manly is only a short walk or bus ride away and supermarkets, shops and restaurants are also nearby.



The Bunkhouse
35 Pine St
Manly NSW 2095
Australia
1800 657 122 (Free call within NSW, bookings only)
+61 2 9976 0472 (International)



The Bunkhouse



Bunkhouse reception



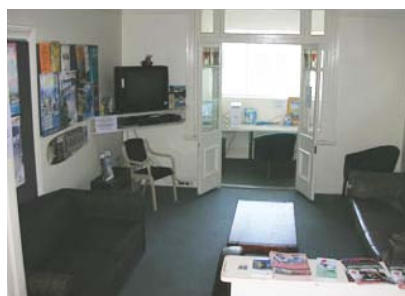
Dormitory (shared) Room



Kitchenette



Bathroom



Lounge Room



Outdoor BBQ area

Accommodation details

Type of accommodation

Choice of Double, twin and dormitory style room to suit your style. All Rooms are self contained, and include a colour TV, refrigerator and linen.

Meals

Self-catering. Light cooking facilities available in every room.

Kitchen

There is a fully equipped commercial kitchen for communal use.

Student lounge

The hostel has a comfortable student common room which includes a large TV/ VCR and vending machine.

Bathrooms

Every room has it's own bathroom. No waiting in the corridor for a shower.

Utilities

Electricity, gas and water are included in the accommodation fee.

Internet and phone

Internet and email access, ISD telephones, Fax service and message service available.

Security and keys

Personal secure lockers are available in every room. Security door and room key provided to each resident.

Linen and towels

Quality beds and clean white linen are provided.

Visitors

No unaccompanied visitors are allowed into the hostels. Visitors are to leave by 11pm. No visitors are permitted to stay overnight.

Noise and restrictions

Students are requested to be considerate to their neighbours and keep noise levels to a minimum especially after 10pm.

Availability

Rooms at the Bunkhouse hostel are on offer year-round. Availability is low during summer.