

English

programmes for junior students



Welcome

Welcome to Kaplan! We aim to offer a programme and destination to suit every young student...

- *Fantastic study destinations in the UK, USA and Australia*
- *Groups and individual students welcome*
- *Wide range of English language levels catered for*
- *Lively and informative lessons complemented by exciting activities*

We are committed to offering high quality education and student welfare at all of our junior centers, and this commitment is recognised by government bodies worldwide. Kaplan International Centers in this brochure are accredited by the British Council in the UK, ACCET in the USA and NEAS in Australia.

We invite you to discover more about our range of programmes and locations, and see how we can offer students an unforgettable learning and living experience abroad.

Our students are at the heart of Kaplan.



Contents

- 
- 
- 
- 4 *Our programmes*
 - 5 *Course focus and structure*
 - 5 *Cambridge ESOL*
 - 6 *Activities*
 - 8 *Student welfare*
 - 10 *Locations*
 - 12 *London Bushey (ages 14-17)*
 - 13 *London Kingston (ages 14-17)*
 - 14 *London UCL (ages 14-17)*
 - 15 *Bournemouth (ages 14-17)*
 - 16 *Salisbury Homestay (ages 13-17)*
 - 17 *Salisbury Residence (ages 12-17)*
 - 18 *Torquay Homestay (ages 14-17)*
 - 19 *Bath Homestay (ages 14-17)*
 - 20 *Whittier College (ages 12-18)*
 - 21 *Northeastern University (ages 14-17)*
 - 22 *San Diego Homestay (ages 14-18)*
 - 23 *Cairns Homestay (ages 12-18)*
 - 24 *Study Tours*
 - 25 *Enrol with us*
 - 26 *Terms and conditions*
 - 27 *Enrolment form*

Our programmes

Kaplan is a world leader in English language education. We are internationally renowned for our high level of teaching and unfailing attention to student welfare across all of our junior centers. We offer a wide range of programmes to suit different needs, preferences and budgets. Take a look at our range of course offerings and we're sure you'll find one that's right for you.

Summer Vacation Programme

Available at all of our UK and US junior centers in the summer months, our Summer Vacation Programme offers 15 hours of English tuition per week plus a varied social schedule. This programme is perfect for those seeking a great balance of structured learning and stimulating activities. A Young Learners Programme with a similar structure is also available at our junior center in Cairns, Australia.

Summer Intensive Programme

Our Summer Intensive Programme, offered at our Bournemouth and Salisbury centers in the UK, offers 21 hours of English tuition per week plus an activity programme. This allows students to maximise their learning during their stay, yet also have fun outside of the classroom.

Please note that the minimum English level for this programme is intermediate.

Cambridge ESOL

At all of our UK junior centers, students can, during their Summer Programme, take either the Key English Test (KET) or Preliminary English Test (PET) and return home with a Cambridge certificate. See page 5 for further details.

Winter Programme

Vacation English course offering 15 hours of tuition per week and a full activity and excursion schedule. The Winter Programme is available in January at our Salisbury Homestay center in the UK.

Study Tours

Low season courses for closed groups of school pupils. Offered at our Bath Homestay, Torquay Homestay and Salisbury Homestay centers in the UK, and at several destinations across Australia (Brisbane, Cairns, Perth and Sydney) and New Zealand (Auckland and Christchurch), Study Tours combine 15 hours of tuition per week with a customised flexible activity programme to suit your budget. The dates and age ranges for Study Tours can be found in the table below. More information is available on page 24.

Junior Center / Destination	Age Range	Study Tours 2011 Dates
Torquay Homestay and Bath Homestay	14-17	3rd January – 18th June 29th August – 17th December
Salisbury Homestay	13-17	30th January – 4th June 29th August – 17th December
Australia and New Zealand	12-18	Year-round subject to availability

Whichever programme you choose, you can be sure of the following:

Lively and informative lessons

Kaplan uses teaching materials specially designed for younger learners covering subjects that will appeal to their age group. Our skilled and friendly teachers will ensure that all lessons offer a diverse mix of activities that maintains learners' interest. We strive to provide lessons that are both enjoyable and challenging. Lessons may be scheduled in the morning or afternoon.

High-calibre staff for effective learning

All of Kaplan's junior centers have a Course Director or Center Manager, who leads a team of trained and professional teachers. The emphasis is on building confidence and developing fluency in a lively and authentic language context.

Focused teaching and monitoring

Students are taught in international classes* according to their level of English, which is assessed at the beginning of their course. Throughout the course, each student's progress is monitored by our teaching staff.

Top priority to student welfare

While young learners are abroad, Kaplan provides high staffing levels to provide the quality of care and welfare that young learners require abroad. Parents can therefore rest assured that their children are in safe hands during their Kaplan course. For more information, see page 8.

Included in the programme price:

- 15 hours of English language tuition per week (12-15 hours in Cairns; 21 hours on the Summer Intensive Programme)
- International classes*
- Classes of max. 15 students**, so each student receives individual attention

- Residence/homestay accommodation with at least 14 meals per week
- Full activity programme, including excursions (excursions available at our US centers for an additional charge)
- Full induction on the first day at school
- Course attendance certificate
- Learning materials
- Junior diary (UK summer centers only)
- 24-hour emergency helpline
- Return airport transfer (San Diego and Cairns only)
- Transport pass for duration of stay (San Diego only)

* At our US centers, students are taught in either international or closed classes. Study Tours and the Cairns Young Learners Programme offer closed classes only, except in Australia and New Zealand where international classes can be requested for Study Tours depending on the age of the students.

** For Study Tours, agents can request a larger class size so that all students in the group can be taught together.

Course focus and structure

The English language programme at Kaplan's junior centers has been developed to reflect the needs of young learners taking into account their age, nationality and level of English.



Course focus

The course content of our junior programmes focuses on all aspects of language development. Each lesson includes systematic language and vocabulary input. At our UK junior centers, this input is linked to a number of Cambridge examinations and is taught through stimulating topics with an emphasis on activities that are productive, dynamic and challenging. More information about Cambridge examinations can be found below.

Junior diary

At our UK summer centers, each student receives a junior diary at the start of their course. This forms an important part of lessons, and together with project work and other language tasks, is carefully linked to scheduled excursions, ensuring students develop their language skills both inside and outside the classroom. Students are at the heart of the learning process, allowing them to build a solid foundation while improving their ability to communicate with accuracy and confidence.

Cambridge ESOL



Take an internationally recognised exam with Kaplan during your summer course in the UK and return home with a Cambridge certificate!

An excellent headstart

Learning English from a young age will give children an advantage that will stay with them for the rest of their life. Cambridge ESOL recognises this and has developed a special system of tests designed to get children on the path to learning English as a foreign language.

An extra to your summer course

The Cambridge ESOL certificates are an internationally recognised measure of English language ability in the skills of listening, speaking, reading and writing. With Kaplan, students attending one of our UK centers can take one of the following examinations during their junior summer course:

- Key English Test (KET): this exam recognises your ability to deal with everyday written and spoken English at at basic level.
- Preliminary English Test (PET): this is an exam for people who can use everyday written and spoken English at an intermediate level. It reflects the use of language in real-life situations.

Exam	Exam date	Exam location
KET/PET Computer Based Test	8th July 2011	Central London and Bournemouth
KET/PET Computer Based Test	21st July 2011	Central London and Bournemouth
KET/PET Paper Based Test	28th July 2011	All UK junior centers*
KET/PET Computer Based Test	13th August 2011	Central London and Bournemouth

KET and PET exams can be taken at all of our UK junior centers for an exam fee of only £35. Special rates are available to groups of 10 students or more.

For more information about Cambridge ESOL, contact your Kaplan representative or visit www.cambridgeesol.org

*Minimum of 4 students per exam at the same center required for the exam to run.

Note: Any travel costs incurred for travelling between the junior center and the exam location are payable by the student.

Activities and excursions

At Kaplan, we recognise the importance of complementing classroom learning. That's why, at all of our junior centers, we run a diverse, exciting programme of fully supervised activities and excursions. Enjoy a wealth of things to see and do while on a Kaplan junior course!

Learning in and out of the classroom

Kaplan's wide range of activities and excursions for juniors has been carefully designed to complement classroom time and to encourage students to learn more about the culture of the destination country, to practise their language skills and to make new friends.

Full supervision

All Kaplan-organised activities and excursions are fully supervised by Kaplan's dedicated activity leaders, so parents can be sure that their children are fully looked after both in and out of the classroom. Furthermore, all activity staff at our UK junior centers wear Kaplan branded clothing, so they can easily be spotted by students when out and about!

Example activities and excursions

During their Kaplan junior course, students can enjoy activities such as:

- Sports
- Team games
- Walking tours
- Arts and crafts
- Film nights
- Quizzes
- Discos
- Barbecues and much more!

Excursions vary by particular center, but will include trips to local places of interest, including a number of world-famous landmarks, so we are sure that students will be kept entertained and return home with memories to last a lifetime!



“

“My students and I had so much fun during the activities and excursions organised by the school. The Kaplan staff were fantastic and made for a great experience. We wish we could stay for longer!”

Javier Perez
Group leader from Spain

“I had such a great time during my Kaplan programme. I improved my English during class time and met many students from other countries. Also, by visiting a new country, you get to see a different way of life. Everything was fantastic and I will remember this trip forever!”

Agathe Edeline
Student from France

”

“The staff at school are very friendly and willing to help. The school organised many activities that we really enjoyed. We learnt so much about American culture through the school's offerings. Thank you very much!”

Susan Wu
Group leader from Taiwan



Student welfare

During their stay at a Kaplan International Center, we will do everything we can to help ensure that students are healthy, happy and safe, so parents can rest assured that their children are well cared for. Read on to see the full range of services offered at Kaplan.

Meeting and transfer service

For added peace of mind, Kaplan offers a return transfer service to and from selected airports and your study destination. At all centers, the transfer includes a meeting service at the airport. Meeting and transfer services must be arranged in advance to ensure students are in safe hands from the minute they arrive abroad. At our San Diego and Cairns centers, airport transfers are included in the package price.

More details about transfers can be found on each center page. Special transfer arrangements apply for groups - please contact your Kaplan representative for details of these and for further information about the most suitable destination airport(s) for your chosen location and recommended flight arrival/departure times.

Unaccompanied minors service

If a student is travelling as an unaccompanied minor or hostess-assisted passenger, Kaplan must be informed in advance and full details of the student's arrival and departure must be provided so that the unaccompanied minors service can be arranged. This costs GBP20 on arrival and GBP50 on departure (free of charge in the USA) and provides a representative to ensure the student safely arrives at and departs from the airport in the country of study. The fee can be shared if two or more unaccompanied minors are travelling together on the same flight. Please check if your airline has any special requirements and notify Kaplan.

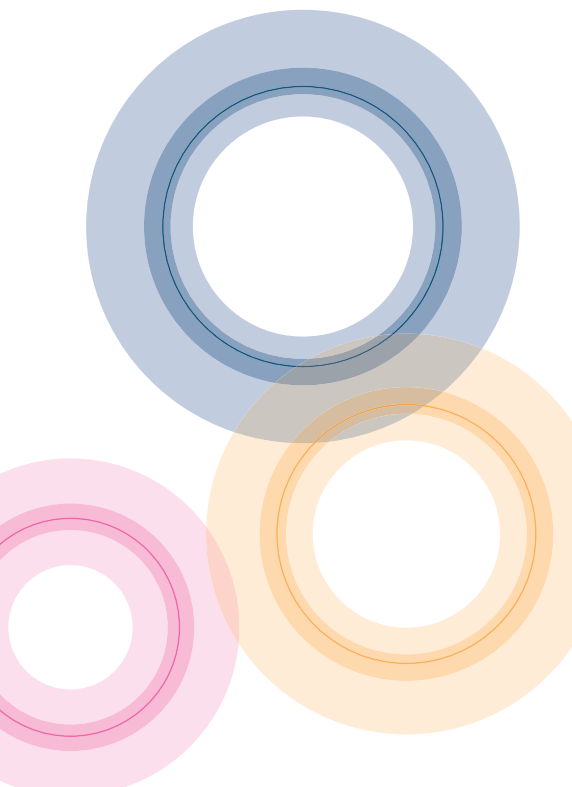
First day induction

On the first morning at school, students will receive a comprehensive induction to help them settle in as quickly as possible. The induction includes a welcome talk by the Course Director or Center Manager;

a placement test to determine each student's level of English; information about one's classes, timetable, the school and local area; an overview of school activities and excursions; and a tour of the school and facilities. Each student will also be given an identity card, for which they need to bring one or more passport-sized photographs. The card contains personal details as well as important contact information if a student needs assistance.

Courier service for visa documents

A courier service is offered to students for the purpose of expediting visa documentation (where applicable). Documents will otherwise be sent by normal postal service. Kaplan's courier service costs from GBP35 for UK bookings, USD50 for USA bookings, AUD75 for Australia bookings and NZD85 for New Zealand bookings. For more information about visas, see page 25 "Enrol with us".





Carefully chosen homestays

Our homestays are carefully selected and regularly visited by our accommodation officers. Hosts are chosen for the good standard of their homes and for the friendly and caring welcome they extend to young guests who will be treated as members of the family during their stay. Homestay hosts will welcome student guests on arrival.

Hosts are usually located either within walking distance or a short bus ride to school (at our San Diego center, the journey may be longer – up to one hour by public transport). In selected locations, Kaplan provides free daily transport to and/or from classes and/or activities.

Note: Stays at UK homestay centers are limited to 27 nights, and students on a longer programme will need to move to a different center after this time. See clause 11 of the Terms and Conditions on page 26 and the enrolment form on page 27 for further details.

Special diet provision

At our homestay centers in the UK, Australia and New Zealand, we can (subject to availability of willing homestay hosts) cater for students who require a special diet such as halal, kosher, lactose-free or gluten-free for a weekly supplement of GBP30 / AUD40 / NZD60.

Safe, secure residences

Residential accommodation is located in safe surroundings and provides a comfortable, secure environment for young students and group leaders. Kaplan or residence staff members also live in the accommodation and are on hand to help students if they have any problems or questions. We have special rules in place at each center to ensure that no student leaves the campus on their own.

Please note that a refundable deposit is payable on arrival at our residential centers to cover any damage and/or loss of keys. The housing deposit per person is GBP30 (Salisbury and Bournemouth), GBP60 (London UCL), GBP100 (London Kingston) or USD50 (Whittier College and Northeastern University). Contact your Kaplan representative for more information.

Travel and medical insurance

It is crucial that young students on a Kaplan course have suitable insurance to cover themselves in case of medical or other emergency. Kaplan can arrange a comprehensive travel and medical insurance policy for international students that includes cover for medical expenses and loss of belongings. For further information and prices, speak to your Kaplan representative. Students must provide details of their medical insurance cover to Kaplan prior to arrival.

Dedicated and trained welfare staff

At each of our centers, we have a dedicated welfare officer whose responsibility is to help ensure that students are healthy and happy while staying with Kaplan. All of our staff are happy to help with any issues that students may have. In addition, in case of any medical matters arising, most centers have staff members trained in First Aid, and all centers have a First Aid kit on site, as well as close links with local doctors, dentists and hospitals.

Our locations



With 11 destinations across 3 countries, we offer somewhere for everyone. Big cities, beautiful campuses, cultural heritage, beach-side bliss. Whatever your scene, Kaplan has a location to match.

London Bushey

- Pleasant rural town only 45 minutes from Heathrow Airport
- Safe school campus with excellent sports and recreational facilities
- Welcoming homestay accommodation with free transport to and from school

London Kingston

- Stunning riverside location close to Heathrow and Gatwick Airports
- Secure university campus setting with fantastic facilities
- Nearby en-suite residential accommodation with staff living on site

London UCL

- Brand new junior center for 2011 at one of England's most prestigious universities
- Fantastic setting in central London only 40 minutes from Heathrow Airport
- Safe, well-placed residential accommodation close to lessons and several top attractions

Bournemouth

- Vibrant town with 12km of sandy beaches just two hours from London
- Compact university campus setting with a wealth of facilities and on-site residential accommodation
- Secure homestays with free evening shuttle bus to and from activities

Salisbury

- Safe, charming city surrounded by beautiful English countryside
- Well-appointed junior centers offering a pleasant learning environment
- Free evening shuttle bus for homestay students; conveniently located residential accommodation

Torquay

- Safe, friendly seaside resort known as the English Riviera
- Dedicated, well-equipped junior school just five minutes from central Torquay
- Friendly homestay accommodation close to school

Bath

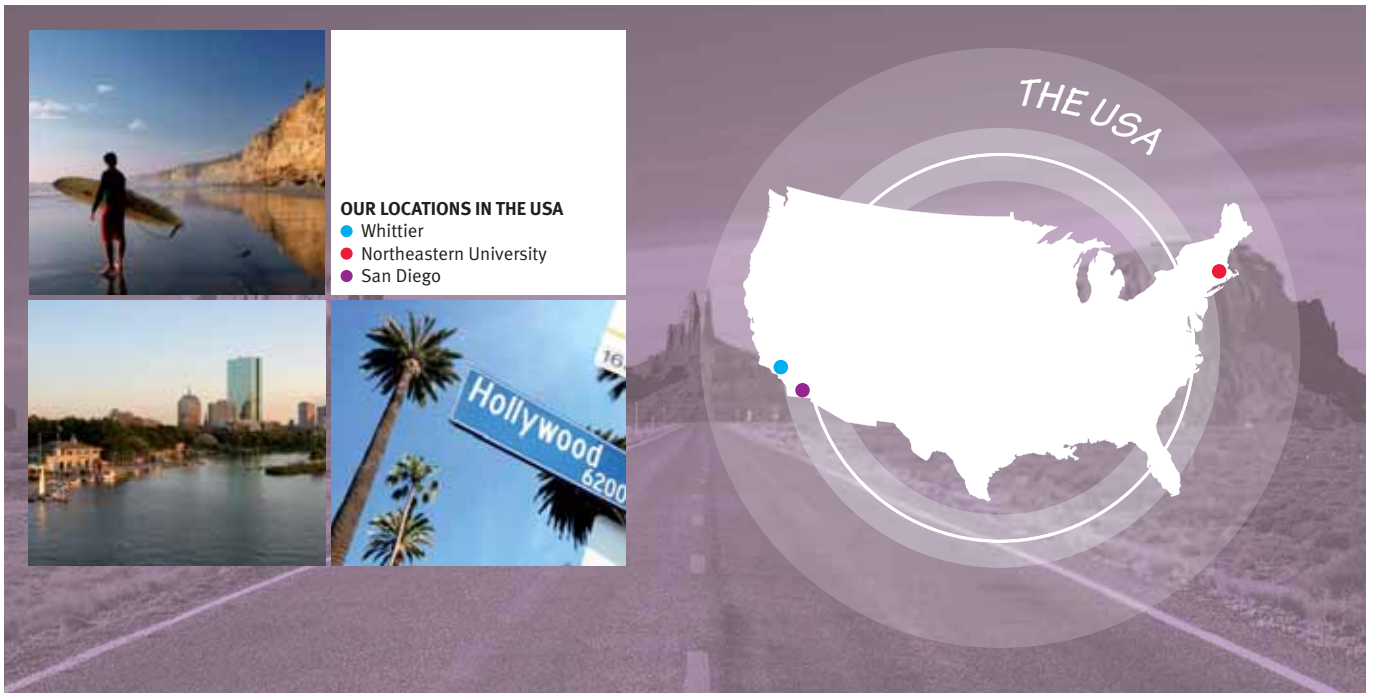
- Beautiful city rich in culture in a glorious valley setting
- Dedicated junior school on Bath's main shopping street
- Caring homestay hosts with full board meal provision



OUR LOCATIONS IN THE UK

- London Bushey
- London Kingston
- London UCL
- Bournemouth
- Salisbury
- Torquay
- Bath





OUR LOCATIONS IN THE USA

- Whittier
- Northeastern University
- San Diego

Whittier College

- Charming and peaceful town close to Los Angeles' major attractions
- Pleasant college campus with wide range of amenities
- Comfortable on-campus residential accommodation close to campus facilities

Northeastern University

- Beautiful urban campus in downtown Boston
- Excellent learning facilities and numerous green spaces
- On-campus residential accommodation offering a safe living environment

San Diego

- Superb coastal setting with fantastic beaches and attractions
- Year-round school in the attractive La Jolla district
- Carefully selected homestay accommodation

Cairns

- Tropical climate and stunning setting between mountains and sea
- Secure school with excellent facilities in the heart of Cairns
- Free daily transport between homestay accommodation and school



London Bushey

Our London Bushey center is based at St. Margaret's school, set in a beautiful rural location on the edge of Bushey, Hertfordshire. It is only 20 minutes from central London by train, and just 45 minutes from Heathrow Airport.

English programmes for junior students



1. St. Margaret's main building
2. Teaching buildings
3. Indoor swimming pool
4. School playing fields
5. Indoor sports hall



Prices (GBP)

	Summer Programme
13 nights	1035
20 nights	1525
27 nights	2015
Extra night	50

Group quotes: Available on request
Cambridge ESOL: See page 5

Courses Available

- Summer Vacation Programme*
- *Cambridge ESOL (KET, PET) can be taken during this course

Center Facilities

- Private school in 74 acres of grounds
- Arts and crafts room
- Indoor heated swimming pool
- 3 tennis courts
- Indoor sports hall
- Extensive playing fields
- Common room

London Bushey

Available to	Individual students and groups
English levels	All levels except beginners
Age range	14-17
2011 center dates	10 July – 6 August
Center capacity	130 students
Arrival day	Sunday (Jul 10,24)
Departure day	Saturday
Accommodation	Homestay with 21 meals per week. Twin rooms, shared bathrooms.
Getting to school	Free daily shuttle bus between school and set pick-up points. Max. 20-minute walk from homestay to pick-up point.

Airport Transfer Information

- Shared transfers: 105 GBP per person return (includes meeting service on arrival) from Heathrow. 45-minute journey each way.
- Private taxi and group transfers also available - details on request.

Activities and Excursions Included

- 5 activities, 1 full-day excursion (except in final week of stay) and 2 half-day excursions per week
- See below for a sample schedule

Sample Schedule (week one)

	MON	TUE	WED	THU	FRI	SAT	SUN
Morning	Placement test, Induction and Orientation	English lessons	English lessons	English lessons	English lessons	Full-day excursion to Oxford	Optional full-day excursion to Thorpe Park (charges apply) or Day with homestay host
Afternoon	Arts & crafts	Excursion to St. Albans	Salsa dancing	Excursion to London	Team sports		
Evening	Evening with homestay host	Evening with homestay host	Bowling	Evening with homestay host	Disco	Evening with homestay host	Evening with homestay host

London Kingston

Kingston is an historical market town on the beautiful River Thames, 20km south west of central London. Our junior center is based on the Knights Park campus of Kingston University, which offers modern facilities and access to extensive green spaces.

English programmes for junior students

London Kingston

Available to	Individual students and groups
English levels	All levels except beginners
Age range	14-17
2011 center dates	3 July – 13 August
Center capacity	130 students
Arrival day	Sunday (Jul 3,17,24,31)
Departure day	Saturday
Accommodation	Residence with 21 meals per week. Single rooms, en-suite bathrooms. Staff live on site.
Getting to school	20-minute walk to Knights Park campus. When walking between the residence and teaching premises, students are accompanied by Kaplan members of staff.



1



2



3



4



5

- Teaching building
- Residential accommodation
- Residence bedroom
- Residence common room
- Campus canteen

Courses Available

- Summer Vacation Programme*
- *Cambridge ESOL (KET, PET) can be taken during this course

Center Facilities

- Well-equipped modern classrooms
- Lecture theatres
- Canteen
- Internet suite
- Students Union for evening activities
- Playing fields and indoor swimming pool close to campus
- Arts and crafts studio

Residence Facilities

- Common room with TV and pool tables
- Adjoining fields for evening games
- Coin-operated laundry facilities
- 24-hour security staff

Airport Transfer Information

- Shared transfers: 105 GBP per person return (includes meeting service on arrival) from Heathrow. 40-minute journey each way.
- Private taxi and group transfers also available - details on request.

Activities and Excursions Included

- 10 activities, 1 full-day excursion (except in final week of stay) and 2 half-day excursions per week
- See below for a sample schedule

Prices (GBP)

	Summer Programme
13 nights	1295
20 nights	1915
27 nights	2535
Extra 7 nights	620
Extra night	60

Group quotes: Available on request
Cambridge ESOL: See page 5

Sample Schedule (week one):

	MON	TUE	WED	THU	FRI	SAT	SUN
Morning	Placement test and Induction	English lessons	English lessons	English lessons	English lessons	Full-day excursion to Brighton	Optional full-day excursion to Thorpe Park (charges apply) or Supervised free time
Afternoon	Orientation tour of Kingston	Excursion to British Museum	Arts & crafts	Excursion to London	Field games		
Evening	Bowling	Quiz night	Film night	Sports tournament	Welcome party	Barbecue	Evening games

London UCL

New for 2011, our London UCL center is based at University College London in the safe and pleasant Bloomsbury area of England's capital city. Heathrow Airport is only 40 minutes away and many of London's top attractions are within walking distance.

English programmes for junior students



1. UCL campus building
2. Classroom
3. Residence bedroom
4. Residence canteen
5. Residence common room



Courses Available

- Summer Vacation Programme*
- *Cambridge ESOL (KET, PET) can be taken during this course

Center Facilities

- Impressive historical buildings in the heart of London
- Modern, well-equipped classrooms
- Campus shop
- Lecture theatre

Residence Facilities

- Common room with TV
- Canteen
- Launderette and weekly linen change
- Hall for discos and activities
- Library

Airport Transfer Information

- Group transfers offered from Heathrow. 40-minute journey each way.
- Further details on request

Sample Schedule (week one):

	MON	TUE	WED	THU	FRI	SAT	SUN
Morning	Placement test and Induction	English lessons	English lessons	English lessons	English lessons	Full-day excursion to Oxford	Optional full-day excursion to Thorpe Park (charges apply) or Free time
Afternoon	Walking tour of London	Excursion to Covent Garden	Excursion to British Museum	Excursion to Hyde Park	Excursion to Tower of London		
Evening	Free evening	Disco	Free evening	Film night	Free evening	Free evening	Karaoke party

London UCL

Available to	Groups only
English levels	All levels except beginners
Age range	14-17
2011 center dates	26 June – 20 August
Center capacity	160 students
Arrival day	Sunday (Jun 26; Jul 3,17,24,31; Aug 7)
Departure day	Saturday
Accommodation	Residence with 21 meals per week. Single rooms with wired internet connectivity (charges apply) and in-bedroom washbasin, shared bathrooms. Staff live on site.
Getting to school	Short walk to lessons. Students must purchase a weekly London travel card for the duration of their stay (charges apply).

Activities and Excursions Included

- 3 evening activities, 1 full-day excursion (except in final week of stay) and 5 half-day excursions per week
- Additional activities and excursions can be arranged at extra cost
- See below for a sample schedule

Prices

- **Group quotes:** Available on request
- **Cambridge ESOL:** See page 5

Bournemouth

Bournemouth is a top seaside resort with 12km of sandy beaches, excellent sports facilities and exciting attractions. The center is based at Bournemouth University's Talbot Campus, which offers a safe, compact and well-equipped environment.

English programmes for junior students

Bournemouth

Available to	Individual students and groups
English levels	All levels including beginners
Age range	14-17
2011 center dates	3 July – 13 August
Center capacity	200 students
Arrival day	Sunday (Jul 3,17,24,31)
Departure day	Saturday
Accommodation	Homestay, 21 meals/week (hot lunch on campus Monday-Friday), twin rooms. OR Single rooms (each with own phone) in residence in Talbot Campus Student Village. Shared living rooms and bathrooms. Single sex areas, staff live on site.
Getting to school	Short bus ride from homestay to campus (free shuttle bus to/from evening activities); short walk from Student Village to lessons



1



2



3



4



5

- Talbot Campus at night
- Talbot Campus Student Village
- Student Village bedroom
- University Atrium
- Bournemouth beach

Courses Available

- Summer Vacation Programme*
- Summer Intensive Programme*

*Cambridge ESOL (KET, PET) can be taken during this course

Center Facilities

- Beautiful green campus
- Spacious, comfortable classrooms
- Atrium with computer suite
- Campus canteen
- Large sports hall and many tennis courts
- All-weather astro-turf pitch
- Student village

Airport Transfer Information

- Shared transfers: 120 GBP per person return (includes meeting service on arrival) from Heathrow. 90-minute journey each way.
- Private taxi and group transfers also available - details on request.

Activities and Excursions Included

- Summer Vacation Programme: 10 activities (6 for homestay students), 1 full-day excursion (except in final week of stay) and 1 half-day excursion per week
- Summer intensive Programme: as above but 8 activities per week (4 for homestay students)
- See below for a sample schedule

Prices (GBP)

	Summer Programme	Intensive Summer Programme
13 nights	Homestay: 925 Residence: 1185	Homestay: 1005 Residence: 1265
20 nights	Homestay: 1360 Residence: 1750	Homestay: 1480 Residence: 1870
27 nights	Homestay: 1775 Residence: 2315	Homestay: 1935 Residence: 2475
Extra 7 nights	Homestay: on request Residence: 565	Homestay: on request Residence: 605
Extra night	Homestay: 50 Residence: 60	Homestay: 50 Residence: 60

Group quotes: Available on request
Cambridge ESOL: See page 5

Sample Schedule (Summer Vacation Programme, residential students, week one)*:

	MON	TUE	WED	THU	FRI	SAT	SUN
Morning	Placement test	English lessons	English lessons	English lessons	English lessons	Full-day excursion to Oxford	Treasure hunt or sports tournament (optional, free of charge)
Afternoon	Induction and orientation	Sports afternoon	Swimming	Excursion to Poole	Beach volleyball		
Evening	Getting to know you games	Film night	Disco	Karaoke evening	Team games	Free evening	Barbecue and games

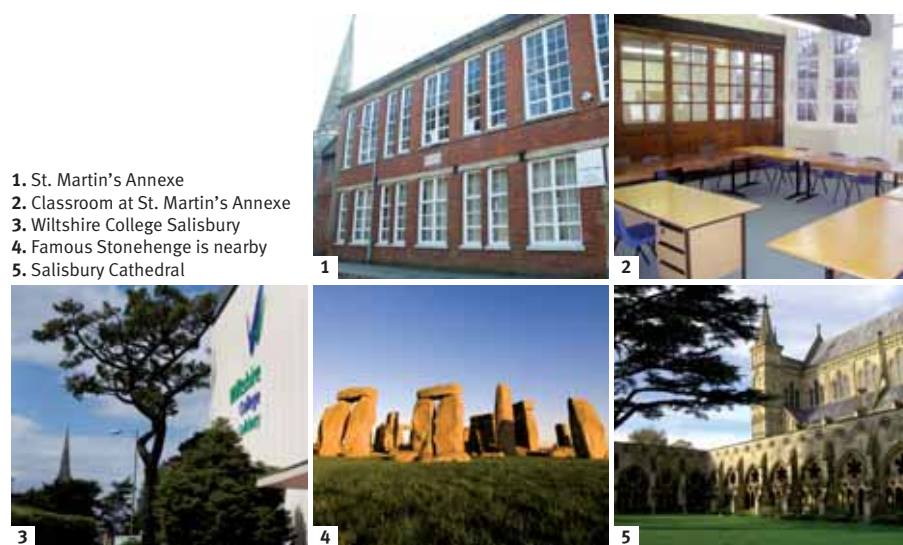
*Homestay students will spend five evenings each week with their homestay host.

Salisbury Homestay

Charming Salisbury is an historical yet modern city with a world-famous cathedral and a population of 40,000 people. Classes are held at St. Martin's Annexe or Wiltshire College Salisbury, both of which provide a pleasant learning environment.

English programmes for junior students

Salisbury Homestay



1. St. Martin's Annexe
2. Classroom at St. Martin's Annexe
3. Wiltshire College Salisbury
4. Famous Stonehenge is nearby
5. Salisbury Cathedral

Available to	Individual students and groups
English levels	All levels including beginners
Age range	13-17
2011 center dates	Winter Programme: 2/3-29 January Summer: 5 June – 20 August Study Tours: see page 24
Center capacity	220 students
Arrival day	Sunday (Jan 2/3,9,16; any Sunday from Jun 5 to Aug 7)
Departure day	Saturday
Accommodation	Homestay with 21 meals per week. Twin rooms, shared bathrooms.
Getting to school	Most hosts live a short bus ride to lessons. Free shuttle bus service from evening activities back to homestay.

Prices (GBP)

	Summer Programme	Intensive Summer Programme	Winter Programme
13 nights	915	995	800
20 nights	1325	1445	1160
27 nights	1735	1895	1520
Extra 7 nights	On request	On request	On request
Extra night	50	50	45

Study Tours: Prices on request
Group quotes: Available on request
Cambridge ESOL: See page 5

Courses Available

- Summer Vacation Programme*
 - Summer Intensive Programme*
 - Winter Programme
 - Study Tours
- *Cambridge ESOL (KET, PET) can be taken during this course

Center Facilities

- Spacious, well-equipped classrooms
- Courtyard garden
- Drink and snack machines

Airport Transfer Information

- Shared transfers**: 105 GBP per person return (includes meeting service on

arrival) from Heathrow. 90-minute journey each way.

- Private taxi and group transfers also available - details on request.
- **Available from 3 July. Students arriving before this date will be offered taxi transfers - prices available on request.

Activities and Excursions Included

- Summer Vacation Programme and Winter Programme: 8 activities and 2 full-day excursions (except in final week of stay) per week
- 1 additional optional half-day excursion each week (charges apply)
- Summer Intensive Programme: 4 activities and 2 full-day excursions (except in final week of stay) per week
- Other programmes: details on request
- See below for a sample schedule

Sample Schedule (Summer Vacation Programme, week one):

	MON	TUE	WED	THU	FRI	SAT	SUN
Morning	Placement test, Induction and Orientation tour	English lessons	English lessons	English lessons	English lessons	Full-day excursion to London	Full-day excursion to Bath
Afternoon	Cathedral visit	Volleyball or Optional excursion to Bourmemouth	Sports or Art & crafts	Film or Tennis afternoon	Swimming or Film afternoon		
Evening	Cinema	Time with homestay host	Barbecue	Bowling	Time with homestay host	Time with homestay host	Time with homestay host

Salisbury Residence

Our Salisbury residential center is based at Godolphin School, a leading private school set in scenic grounds. The campus provides a secure, controlled environment for young learners.

English programmes for junior students

Salisbury Residence

Available to	Individual students and groups
English levels	All levels including beginners
Age range	12-17
2011 center dates	4 July – 13 August
Center capacity	300 students
Arrival day	Sunday/Monday (Jul 4,17,24,31)
Departure day	Saturday
Accommodation	Residence with 21 meals per week. Two, three, four and five-bedded rooms with shared bathrooms (off-campus room with en-suite bathroom available for a supplement).
Getting to school	Maximum 10-minute walk from residence to lessons



1



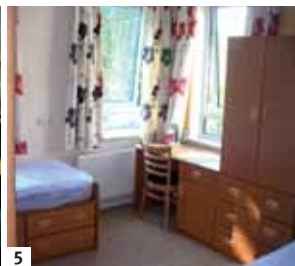
2



3



4



5

- Godolphin School
- Residential accommodation
- Residence common room
- Dining room
- Residence bedroom

Courses Available

- Summer Vacation Programme*
 - Summer Intensive Programme*
- *Cambridge ESOL (KET, PET) can be taken during this course

Center Facilities

- Private school set in scenic grounds
- Swimming pool and tennis courts
- Sports hall and extensive playing fields
- Art block and theatre
- Canteen

Residence Facilities

- Shared dining area and common room
- Free internet room
- Extensive grounds and courtyards
- Telephone facilities

Airport Transfer Information

- Shared transfers: 105 GBP per person return (includes meeting service on arrival) from Heathrow. 90-minute journey each way.
- Private taxi and group transfers also available - details on request.

Activities and Excursions Included

- Summer Vacation Programme: 10 activities and 2 full-day excursions (except in final week of stay) per week
- Summer Intensive Programme: 6 activities and 2 full-day excursions (except in final week of stay) per week
- 1 additional optional half-day excursion each week (charges apply)
- See below for a sample schedule

Prices (GBP)

	Summer Programme	Intensive Summer Programme
13 nights	1205	1285
20 nights	1780	1900
27 nights	2355	2515
Extra 7 nights	575	615
Extra night	60	60

Off-campus room with en-suite bathroom supplement: 30 GBP per week (available in July only)
Group quotes: Available on request
Cambridge ESOL: See page 5

Sample Schedule (Summer Vacation Programme, week one):

	MON	TUE	WED	THU	FRI	SAT	SUN
Morning	Placement test and Induction	English lessons	English lessons	English lessons	English lessons	Full-day excursion to London	Full-day excursion to Oxford
Afternoon	Orientation tour and Team games	Visit to Salisbury Market	Treasure hunt or Salsa dancing	Mini Olympics or Swimming	Sports or Cathedral visit		
Evening	Disco	Indoor sports or Arts & crafts	Games night	Disco	Film night	Supervised free time	Supervised free time

Torquay Homestay

Torquay is an attractive, safe town, known for its stunning beaches, fantastic climate and excellent sports facilities. Students are based at our dedicated junior school just five minutes from central Torquay.

English programmes for junior students

1. Torquay junior school
2. Common room
3. Torquay students in class
4. Torquay marina
5. One of Torquay's many beaches



Torquay Homestay

Available to	Individual students and groups
English levels	All levels including beginners
Age range	14-17
2011 center dates	Summer: 19 June – 13 August Study Tours: see page 24
Center capacity	200 students
Arrival day	Sunday (any Sunday from Jun 19 to Jul 31)
Departure day	Saturday
Accommodation	Homestay with 21 meals per week (packed lunches provided by the school on weekdays). Twin rooms, shared bathrooms.
Getting to school	Most hosts are within a 15-minute walk to school; some might be a short bus ride away. Hosts will bring students to school on the first morning.

Prices (GBP)

	Summer Programme
13 nights	895
20 nights	1315
27 nights	1725
Extra 7 nights	On request
Extra night	50

Study Tours: Prices on request
Group quotes: Available on request
Cambridge ESOL: See page 5

Courses Available

- Summer Vacation Programme*
 - Study Tours
- *Cambridge ESOL (KET, PET) can be taken during this course

Center Facilities

- Spacious Victorian building with comfortable classrooms
- Common room with TV, table tennis and pool table
- Snack bar
- Patio and scenic terraced garden

Airport Transfer Information

- National Express coach journey. 135 GBP per person return (Heathrow - includes meeting service on arrival), 4.5 hour journey each way. 220 GBP per person return (Gatwick - includes meeting services on arrival and on connection at Heathrow on the way to Torquay), 6-hour journey each way.
- Private taxi and group transfers also available - details on request.

Activities and Excursions Included

- Summer Vacation Programme: 6 activities, 1 full-day excursion (except in final week of stay) and 1 half-day excursion per week
- Study Tours: details on request
- See below for a sample schedule

Sample Schedule (Summer Vacation Programme, week one):

	MON	TUE	WED	THU	FRI	SAT	SUN
Morning	Placement test, Induction and Orientation tour	English lessons	English lessons	English lessons	English lessons	Full-day excursion to Plymouth or Exeter or Woodlands Adventure Park	Free day with homestay host
Afternoon	Sports afternoon	Visit to Kents Cavern	Water slides and beach afternoon	Trail quiz	Ferry boat trip to Brixham		
Evening	Time with homestay host	Disco	Time with homestay host	Barbecue party	Time with homestay host	Time with homestay host	

Bath Homestay

Bath is a small but lively city, famous for its stunning architecture, Roman Baths, prestigious university and beautiful valley setting. Students have lessons at our dedicated junior school in the heart of the city.

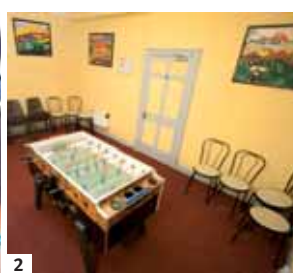
English programmes for junior students

Bath Homestay

Available to	Individual students and groups
English levels	All levels except beginners
Age range	14-17
2011 center dates	Summer: 19 June – 6 August Study Tours: see page 24
Center capacity	150 students
Arrival day	Sunday (any Sunday from Jun 19 to Jul 24)
Departure day	Saturday
Accommodation	Homestay with 21 meals per week (packed lunch provided by the school on weekdays). Twin rooms, shared bathrooms.
Getting to school	Most hosts are within a 15-minute bus ride of the school



1



2



3



4



5

1. Students in class
2. Games room
3. Common room
4. River Avon
5. Excursion to Bath Abbey

Courses Available

- Summer Vacation Programme*
- Study Tours

*Cambridge ESOL (KET, PET) can be taken during this course

Center Facilities

- Dedicated junior school on Bath's main shopping street
- Six classrooms
- Student common room
- Games room

Airport Transfer Information

- National Express coach journey. 120 GBP per person return (Heathrow - includes meeting service on arrival), 2.5 hour journey each way. 205 GBP per person return (Gatwick - includes meeting services on arrival and on connection at Heathrow on the way to Bath), 3.5 hour journey each way.
- Private taxi and group transfers also available - details on request.

Activities and Excursions Included

- Summer Vacation Programme: 6 activities, 1 full-day excursion (except in final week of stay) and 1 half-day excursion per week
- Study Tours: details on request
- See below for a sample schedule

Prices (GBP)

	Summer Programme
13 nights	915
20 nights	1335
27 nights	1755
Extra 7 nights	On request
Extra night	50

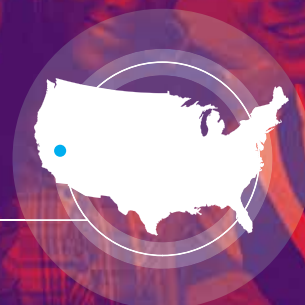
Study Tours: Prices on request
Group quotes: Available on request
Cambridge ESOL: See page 5

Sample Schedule (Summer Vacation Programme, week one):

	MON	TUE	WED	THU	FRI	SAT	SUN
Morning	Placement test and Induction	English lessons	English lessons	English lessons	English lessons	Full-day excursion to London or Glastonbury or Oxford	Free day with homestay host
Afternoon	Orientation tour of Bath	Excursion to Stonehenge	Crazy golf	Photo competition	Boat trip		
Evening	Time with homestay host	Karaoke party	Time with homestay host	Disco	Time with homestay host	Time with homestay host	

Whittier College

Whittier College offers a scenic, well-equipped campus, providing a safe living and learning environment for students. It is also just one hour by bus from downtown Los Angeles, where students can enjoy a number of local attractions.



English programmes for junior students

1. Whittier College campus
2. Residential accommodation
3. Residence bedroom
4. Cafeteria
5. Classroom



Whittier College

Available to	Groups only
English levels	All levels including beginners
Age range	12-18
2011 center dates	19 June – 13 August
Center capacity	250-300 students
Arrival day	Sunday (any Sunday from Jun 19 to Jul 31)
Departure day	Saturday
Accommodation	Campus residential accommodation with 19 meals per week. Twin rooms for students; single rooms for group leaders. Shared bathrooms.
Getting to school	Short walk to lessons / activities / cafeteria

Courses Available

- Summer Vacation Programme

Center Facilities

- Scenic college campus
- Computer room with free internet access
- Sports field
- Library
- Book shop
- Cafeteria
- Snack bar
- Chapel
- Free wireless internet connectivity

Residence Facilities

- Student lounge with TV
- Laundry facilities
- 24-hour security
- Vending machines
- Communal kitchen (available at selected residences only)

Airport Transfer Information

- Group transfers can be arranged on request (charges apply)
- 1-hour journey each way (Los Angeles LAX Airport)

Activities and Excursions Included

- Minimum 3 activities per week
- Optional excursions can be arranged on request (charges apply)
- See below for a sample schedule

Prices

Group quotes: Available on request

Sample Schedule (week one):

	MON	TUE	WED	THU	FRI	SAT	SUN
Morning	Placement test and Orientation	English lessons	English lessons	English lessons	English lessons	Optional full-day excursion to Magic Mountain theme park (charges apply) or Free day	Optional full-day excursion to Disneyland (charges apply) or Free day
Afternoon	Getting to know you games	Arts & crafts	Dancing	Free afternoon	Sports / Team games		
Evening	Social evening at residence	Film night	Talent show	Disco	Free evening		

Northeastern University

Northeastern University is situated in a beautiful enclosed campus with a park-like setting and tree-lined walkways. The well-equipped campus is just 10 minutes by train from downtown Boston and offers an ideal environment for young students.

English programmes for junior students

Northeastern University

Available to	Groups only
English levels	All levels including beginners
Age range	14-17
2011 center dates	26 June – 6 August
Center capacity	200 students
Arrival day	Sunday (any Sunday from Jun 26 to Jul 24)
Departure day	Saturday
Accommodation	Campus residential accommodation with 19 meals per week. Twin rooms for students; single rooms for group leaders. Shared bathrooms.
Getting to school	Short walk to lessons / activities / cafeteria



1



2



3



4



5

1. Northeastern University campus
2. Cafeteria
3. Campus book shop
4. Residential accommodation
5. Residence bedroom

Courses Available

- Summer Vacation Programme

Center Facilities

- Northeastern University campus in Back Bay Area of Boston
- Well-equipped classrooms
- Cafeteria
- Coffee shops
- Book shop
- Library
- Free wireless internet connectivity
- Green spaces for sports and recreation

Residence Facilities

- Laundry facilities
- 24-hour security
- Vending machines

Airport Transfer Information

- Group transfers can be arranged on request (charges apply)
- 45-minute journey each way (Boston Logan Airport)

Activities and Excursions Included

- Minimum 3 activities per week
- Optional excursions can be arranged on request (charges apply)
- See below for a sample schedule

Prices

- **Group quotes:** Available on request

Sample Schedule (week one):

	MON	TUE	WED	THU	FRI	SAT	SUN
Morning	Placement test and Orientation	English lessons	English lessons	English lessons	English lessons	Optional full-day excursion to downtown Boston (charges apply) or Free day	Optional full-day excursion to Cambridge and Harvard University Tour (charges apply) or Free day
Afternoon	Getting to know you games	Faneuil Hall	Dancing	Free afternoon	Sports / Team games		
Evening	Social evening at residence	Film night	Talent show	Disco	Free evening		

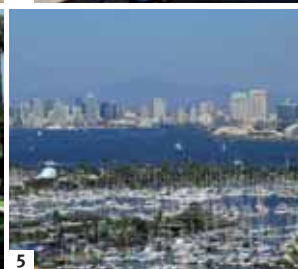
San Diego Homestay

San Diego in California offers fantastic beaches, parks and shops as well as a near-perfect climate. The junior programme is based at Kaplan's year-round center in La Jolla - a well-equipped school in attractive, safe surroundings.



English programmes for junior students

1. Year-round school in La Jolla
2. Classroom
3. Multimedia room
4. Balboa Park
5. Downtown San Diego



San Diego Homestay

Available to	Individual students and groups
English levels	All levels including beginners
Age range	14-18
2011 center dates	26 June – 20 August
Center capacity	50 students
Arrival day	Sunday (any Sunday from Jun 26 to Aug 7)
Departure day	Saturday
Accommodation	Homestay with 14 meals per week. Twin rooms for students; single rooms for group leaders. Apartment accommodation available on request for group leaders.
Getting to school	Hosts are within a 60-minute bus and/or train ride from school. Transport pass included in package price.

Prices (USD)

	Summer Programme
13 nights	1720
20 nights	2500
27 nights	3280
Extra 7 nights	On request
Extra night	Not available except by special request

Group quotes: Available on request

Courses Available

- Summer Vacation Programme

Center Facilities

- Year-round school in La Jolla
- Well-equipped classrooms
- Inviting student lounge
- Multimedia room
- Vending machines
- Free wireless internet connectivity
- Small refrigerator for storing lunch items

Airport Transfer Information

- Return transfer to/from San Diego Airport included in price for individual students
- Group transfers can be arranged on request (charges apply)
- 40-minute journey each way (San Diego Airport)

Activities and Excursions Included

- Minimum 3 activities per week
- Optional excursions can be arranged on request (charges apply)
- See below for a sample schedule

Sample Schedule (week one):

	MON	TUE	WED	THU	FRI	SAT	SUN
Morning	Placement test and Orientation	English lessons	English lessons	English lessons	English lessons	Optional day trip to San Diego Zoo (charges apply) or Free day	Optional whale watching excursion (charges apply) or Free day
Afternoon	Getting to know you games	Arts & crafts	Tour of San Diego Old Town	Free afternoon	Sports / Team games		
Evening	Free evening	Film night	Talent show	Disco	Free evening		

Cairns Homestay

Cairns enjoys a stunning setting between rainforest mountains and idyllic coral sea. Our junior programme takes place at our year-round center in the heart of Cairns, which offers excellent facilities in a secure environment.

English programmes for junior students

Cairns Homestay

Available to	Individual students and groups
English levels	All levels including beginners
Age range	Young Learners: 12-15 Study Tours: 12-18
2011 center dates	Young Learners: 24 July – 7 August Study Tours: see page 24
Center capacity	50 students
Arrival day	Sunday
Departure day	Saturday
Accommodation	Homestay with 21 meals per week. Single rooms.
Getting to school	Free daily transport to and from school.



1



2



3



4



5

1. Year-round Cairns center
2. Terrace café
3. Lagoon at Cairns Esplanade
4. Local wildlife
5. Cairns' stunning setting

Courses Available

- Young Learners Programme
- Study Tours*

*These are also offered at all of our year-round adult centers in Australia and New Zealand. For more information, see page 24 or contact your Kaplan representative.

Center Facilities

- Year-round school in central Cairns
- Air-conditioned classrooms with direct access to balconies
- Computer room with free internet access
- Outdoor terrace with café

Airport Transfer Information

- Return transfer included in price
- Maximum 20-minute journey each way (Cairns International)

Activities and Excursions Included

- 4 or 5 activities per week and 1 full-day excursion every other week
- Study Tours: details on request
- See below for a sample schedule

Prices (AUD)

	Young Learners Programme
6 nights	1095
13 nights	1690
Extra night	45

Group quotes: Available on request

Sample Schedule (Young Learners Programme, week one):

	MON	TUE	WED	THU	FRI	SAT	SUN
Morning	Placement test, Orientation and English classes	English lessons	English lessons	English lessons	English lessons	Free day with homestay host	Free day with homestay host
Afternoon	Walking tour of Cairns	Beach afternoon	Film afternoon	Treasure hunt and Shopping	Sports afternoon		
Evening	Time with homestay host	Time with homestay host	Time with homestay host	Time with homestay host	Time with homestay host		

Study Tours

In addition to our fantastic junior programmes at 12 destinations worldwide, we also offer low-season courses for closed groups of school pupils. Study Tours are available at a number of exciting locations and combine 15 hours of tuition per week with a customised flexible activity programme to suit your budget.

1. Memories to last a lifetime
2. Explore New Zealand
3. Mix learning and fun!
4. Our friendly and expert staff looking after students in Torquay
5. Students seeing the historic sights of Bath Spa
6. Visit the exciting city of Sydney



A fantastic programme at a time that suits

Study Tours offer a number of the same benefits presented by our junior programmes, with the added advantage that they are available at almost any time of year. Take a look at the dates below and we are confident that you will find a time to suit your group's needs and preferences.

Great study destinations

We offer Study Tours at 10 attractive destinations across the UK, Australia and New Zealand (see the table below for a full list). At all destinations, lessons take place at well-equipped, centrally located schools with a thriving student community. Class time is complemented by stimulating activities and exciting excursions to local places of interest. We can tailor the number and type of activities/excursions to suit particular budgets.

Safe environment and secure accommodation

We give the same unfailing attention to student welfare at our Study Tours as we do on our other junior programmes, so parents can be confident that their children are safe during their time with us. At all of our Study Tour destinations, students are housed with friendly, welcoming homestay hosts in the local area. Hosts provide 14 meals per week - breakfast and dinner each day.

Junior Center / Destination	Age Range	2011 Dates
UK: Torquay, Bath	14-17	3rd January – 18th June, 29th August – 17th December
UK: Salisbury	13-17	30th January – 4th June, 29th August – 17th December
Australia: Brisbane, Cairns, Perth, Sydney City, Sydney Manly	12-18	All year round subject to availability
New Zealand: Auckland, Christchurch	12-18	All year round subject to availability

Enrol with us

Application

Individual students: Please complete and sign the enrolment form on page 27 and send it to your Kaplan representative with a non-refundable deposit (speak to your Kaplan representative for more details). A courier fee may also be payable for sending out visa documentation. Students aged 18 must sign the enrolment form to say that they have read, understood and agreed to be bound by these Terms and Conditions. For students aged under 18, a parent or guardian must read and sign the enrolment form on their behalf.

Groups: For group applications, please contact your Kaplan representative.

Your privacy is important to us. Please note that by submitting your personal data to us, you are accepting the terms described in our Privacy Policy, which can be found at: www.kaplaninternational.com/privacy/

Payment

All fees must be paid in full no later than 30 days before the programme start date as stated on the enrolment form. If a booking is made fewer than 30 days before the programme start date, the fees are immediately payable. If payment in full has not been received prior to the programme commencement date the student will not be allowed to start the programme. Further details are available from your Kaplan representative. For groups, a booking is not fully confirmed until a non-refundable deposit has been received by Kaplan. Further details are available from your Kaplan representative.

Visa information

It is the responsibility of the student to arrange for all applicable travel permits or visas and to have a valid passport. Students are responsible for ensuring that they comply with the terms of their visas. Payment may be required in full prior to the issuing of any of the visa documentation referred to below.

UK: If the student's application is successful, we will provide a visa letter to help with the student's application for either a Child Visitor Visa or a Student Visitor Visa.

USA: If the student's application is successful and we have received the required payment, we will send acceptance documents which are required to apply for a tourist visa.

Australia: Information about how to apply for a tourist visa may be found on this website: www.immi.gov.au/visitors/

New Zealand: Details of visa and permit requirements are available through the New Zealand Immigration Service and can be viewed on their website at: www.immigration.govt.nz

Courier fees

A courier service is available on request to students for the purpose of expediting visa documentation (where applicable). Documents will otherwise be sent by normal postal service. The courier service costs are as follows:

- From GBP35 for UK bookings;
- USD50 for USA bookings;
- AUD75 for Australia bookings;
- NZD85 for New Zealand bookings.

Travel and medical insurance

Students enrolling with Kaplan must have adequate travel and medical insurance for the duration of their stay regardless of their programme length or visa type. Kaplan can arrange travel and medical insurance for junior students (further details on page 9). Students are required to provide the details of their insurance policy, if not arranged by Kaplan, before they arrive. Students will not be allowed to commence a programme until they have obtained satisfactory travel and medical insurance.

Health declaration

Students must report on their application any mental or physical illness, allergy, disability or condition that may interfere with their ability to successfully complete their programme, that may impact the health and well-being of any other student, homestay host or staff member, that may require monitoring, treatment or emergency intervention of any kind during the student's anticipated period of enrolment, or that may require special accommodations.

Kaplan reserves the right to reject an applicant or terminate a student's enrolment in the programme if the student's continued participation represents a risk to their health and safety or to the health and safety of other students, the student's or another homestay host, or staff, or if, notwithstanding reasonable accommodations, in the opinion of Kaplan, the student's physical or mental condition

makes the student unable or unlikely to successfully complete their programme. Refunds in such circumstances are at the discretion of Kaplan.

USA: Some centers located on university campuses require students to provide a completed Health Declaration and Immunization form.

Fees

Details of what the programme fee includes can be found on page 4 of this brochure and on the junior center pages. Kaplan reserves the right to withhold the granting of a certificate attained by a student if any fees remain outstanding.

Additional services

Any additional services (transfers and travel at most centers, laundry, telephone costs, optional excursions, travel and medical insurance and costs, special diet, exam fees, change of accommodation and enrolment amendments) are not included in any programme fees and will be charged separately.

Under 18 year olds

Under 18 year olds may be required to pay a guardian fee, provide custodianship documents, live in Kaplan-approved accommodation and must book Kaplan's transfer service and have adequate travel and medical insurance. All students under 18 must provide signed Minor Authorisation forms prior to arrival.

UK: The UK government requires the parent/guardian of any student under 18 to complete an Authorisation of Emergency Medical Treatment form, a Programme Participation Waiver form and a Consent to Travel form, all of which will be provided at the time of booking. The completed Authorisation of Emergency Medical Treatment and Programme Participation Waiver forms must be received prior to the commencement date of the programme as stated on the enrolment form.

Group quotes

At all of our junior centers, group quotes are available on request. Please contact your Kaplan representative for further information.

General Terms and Conditions (individual students - General Terms and Conditions for groups are available from your Kaplan representative)

1. Rules and regulations: Students' arrangements with Kaplan are governed by the law of the country where the particular school attended is located.

2. Arrivals and departures: Students should arrive for their programme on the Sunday, where the academic element of the programme begins on the Monday, unless otherwise advised. Accommodation is booked from the Sunday (being the programme commencement date) until the Saturday after the academic element of the programme has ended. Students should notify their Kaplan representative of their flight arrival and departure times as they may need to pay an-out-of hours fee if they arrive and/or depart early in the morning or late at night.

3. Late arrivals, vacations and absences: If a student enrolls late or is absent at any time during the programme, no refund will be made for the time missed. A student must notify his/her Kaplan representative in advance if he/she is going to arrive on the programme after the programme commencement date. Failure to notify the Kaplan representative by such date may result in a student's enrolment being refused. Periods of absence cannot be made up with a free extension of the programme.

4. Meals and classes missed: No refunds or substitutions will be made for meals or classes missed owing to excursions, first day orientation or other obligations that fall outside the normal schedule.

5. Public holidays: Classes are normally not held and most center facilities are closed on public holidays. Compensation will not be made for classes not offered on public holidays.

6. Campus facilities: Students attending a junior center at a university or college campus location are advised that some campus facilities may not be available during campus holidays. Further details are available from your Kaplan representative.

7. Change fees: If a student requests a change of center location, programme dates, accommodation or programme type fewer than 4 weeks before the programme start date or after the programme has started, a change fee of GBP60, USD100 or AUD75 will be charged which is payable at the time the request is made. If changing to a center where fees are lower, the difference in fees will not be refunded. If changing to a more expensive center or programme, the difference in fees will be charged. All changes are subject to Kaplan's discretion and require the approval of the Center Manager and in the case of students aged under 18, the written consent of the student's parent and/or guardian. A student will not be charged a change fee if he/she extends a programme. It is the responsibility of the student to pay for any programme extensions. Any change to a programme resulting in a reduction in lessons will be treated as a termination of the existing booking and a rebooking and will thus be subject to the Termination Policy.

8. Duration of lessons: All English lessons are 45 minutes in duration (60 minutes on the Young Learners Programme in Cairns). Classes run from Monday to Friday and lessons may be scheduled both in the morning and the afternoon.

9. Programme changes: Kaplan has the right to change programme dates, course curricula, tutors, locations and programmes at any time at its discretion. However, in cases where the programme is rescheduled prior to the start of the programme start date and the new date is unacceptable to the student, all fees will be refunded.

10. Prices: Kaplan has the right to change prices at any time. Prices quoted in the brochure are valid for programmes starting in 2011.

11. Maximum UK homestay center stay: Students are not permitted to stay at the same UK homestay center for more than 27 consecutive nights. If any homestay student is on a programme running longer than 27 nights, the student will be moved to the alternative homestay or residential center indicated on the enrolment form, subject to availability.

In all cases of a homestay student studying on a programme lasting longer than 27 nights, the following rules apply:

- The duration of the extension beyond 27 nights must be a multiple of 7 nights;
- The price for each 7 nights at the center to which the student moves will be charged at the amount quoted under the heading "extra 7 nights" on the corresponding center page in this brochure;
- The student must pay any transport costs associated with moving to a new center;
- No change fee will be charged.

In cases where a student moves to a residential center, a refundable residential accommodation deposit will be payable on arrival (see clause 12 "Residential accommodation deposit" for more details).

12. Residential accommodation deposit: A refundable deposit (which is not included in the programme fee) will be charged on arrival to students taking residential accommodation. Further details are available on page 9 and from your Kaplan representative. Any damage or loss caused by a student will be deducted from the deposit, and students are liable to pay for any surplus charges not covered by the deposit amount. In some cases the deposit may be non-refundable if the booking is cancelled or terminated (see below for more details).

13. Conduct and discipline: Kaplan may expel or suspend any student whose behaviour does not comply with center rules and/or local laws. Such offences include but are not limited to:

- Under-age purchase, attempted purchase or consumption of alcohol, cigarettes or tobacco;
- Possession of illegal substances;
- Damage to property of any kind;
- Unsatisfactory attendance at lessons/activities (whether or not such attendance is in breach of any visa attendance requirements);
- Violent or threatening behaviour to others;
- In such cases, no refund will be given. The student will be liable to pay any costs linked to their expatriation to their home country.

14. Liability: The liability of Kaplan, its group companies, their directors, officers, employees, affiliates, agents and partners with respect to losses arising from negligence (except where such liability cannot be excluded as a matter of law), breach of contract or otherwise will be limited in all circumstances to the full amount paid to Kaplan or the relevant Kaplan group company by the relevant student for the particular programme. Such companies and persons will in no circumstances have any liability for indirect or consequential losses or damages.

15. Force majeure: Kaplan will not be liable in cases where it is unable to fulfil any services to which it is contractually bound because of fire, natural disaster, act of government, failure of suppliers or subcontractors, labour disputes or other reasons which are beyond its control.

16. Codes of practice: Kaplan has agreed to observe and be bound by the Australian National Code of Practice 2007 and the Educational Services for Overseas Students Act 2010 (ESOS Act 2010). Information on these Codes is available from www.aei.gov.au/aei/esos

17. Australia: Kaplan Aspect Cairns Pty Ltd is trading as and referred to as Kaplan International Center Cairns. Agreement to these Kaplan Terms and Conditions does not remove the right to take further action under Australia's consumer protection laws, or their right to pursue other legal remedies under Australian law. All additional information and documents can be found at www.kaplaninternational.com

18. Distance selling regulations: Where a student who is applying to study in the UK resides in the EU at the time of signing the enrolment form, the student has 7 working days from the date of signing to cancel his/her enrolment by notifying his/her Kaplan representative. After such time, fees will only be repayable in accordance with these Terms and Conditions.

19. Terms and Conditions for groups: Separate General Terms and Conditions apply for group bookings. Please contact your Kaplan representative for details.

REFUND POLICY

Refunds will be made via the Kaplan representative to whom the fees were originally paid, or to the student's (or their parent's or guardian's) bank account in the same country in which the fees were originally paid. All refunds will be made within 45 days of written notification. In the event of Kaplan cancelling or terminating a programme, a full refund of all unused fees will be made.

Australia: Refunds will be paid within 14 working days of written notification. In accordance with the ESOS Act 2010, providing the student has not withdrawn before the default day, Kaplan will pay a full refund to the student within 14 days if the programme being offered does not commence on the agreed start date, or the programme is stopped at any time after it starts and before it is completed; or the programme is not provided in full to the student because a sanction has been imposed on the junior center. These terms and conditions do not remove the right of the student to take action under Australia's customer protection laws.

CANCELLATION POLICY

'Cancellation' means cancelling a programme before the start date of the programme, and for Cairns and the USA only, also includes failing to start the programme on the programme commencement date (excluding late arrivals as per paragraph 3).

UK and USA: The following policy applies to individual student cancellations:

- In cases where cancellations are made in writing at least 7 days (homestay centers) or at least 14 days (residential centers) before the arrival date listed on the booking confirmation form, 100% of the programme price will be refunded, but the courier fee, deposit, travel and medical insurance fee and any other additional service charges are non-refundable (up to a maximum of USD500 for USA programmes);
- In cases where a student's visa application is rejected, upon receipt of the relevant supporting documentation, the above policy will apply, except that the deposit will be refunded in addition to the programme fee;
- For cancellations made fewer than 7 days (homestay centers) or fewer than 14 days (residential centers) before the arrival date listed on the booking confirmation form, the programme price will be refunded less one week's package fee. Additionally, the courier fee, travel and medical insurance fee and any other service charges are non-refundable (up to a maximum of USD500 for USA programmes).

Cairns Young Learners: The following policy applies to individual student cancellations:

- Cancellation made in writing 14+ days prior to the arrival date listed on the booking confirmation form: 90% refund of the programme fee;
- Cancellation made in writing 7-13 days prior to arrival: 60% refund of the programme fee;
- Cancellation made in writing 0-6 days prior to arrival: 30% refund of the programme fee.

The courier fee, deposit, travel and medical insurance fee and any other service charges are non-refundable in all cases (up to a maximum USD500 for USA programmes).

TERMINATION POLICY

'Termination' means stopping or leaving all or part of the programme once the programme has started, including any extensions to a programme, and in the UK only, may also include failing to start the programme on the programme commencement date (excluding late arrivals as per paragraph 3). When determining the number of weeks completed, a partial week will be counted as a whole week, provided the student was present at least one day during the scheduled week. In all cases the deposit and additional service charges (eg. airport transfers at most centers, courier fees, travel and medical insurance fee etc.) are non-refundable and written notification of termination must be given to the Center Manager. Students who terminate their programme will not be eligible to receive a Kaplan certificate of attendance.

Kaplan's refund policy for individual student terminations in the USA is as follows:

- Programmes of up to 4 weeks: No refund, irrespective of when the termination is effective.
- Programmes of over 4 weeks: The first 4 weeks are non-refundable and refunds for any additional weeks will be calculated as follows for terminations made:
 - Where notice of termination is given during the 1st week: 75% of programme fees for additional weeks;
 - Where notice of termination is given during the 2nd week: 50% of programme fees for additional weeks;
 - Where notice of termination is given during the 3rd week: 25% of programme fees for additional weeks;
 - Where notice of termination is given during or after the 4th week: no refund.

UK and Cairns Young Learners: Students terminating a programme are not entitled to a refund in respect of any fees paid.

Kaplan reserves the right to notify the relevant government department where a student cancels, terminates or is expelled from the programme.

These Terms and Conditions may differ according to any changes in the policy made by the government where the junior center is located or at Kaplan's discretion. Students will be notified at the time of booking of any such amendments. Any dispute, claim or other matter arising will be subject to the current laws in the destination country. In these Terms and Conditions, Kaplan refers to all Kaplan International College schools including Kaplan International Centers in the UK, USA and Australia and the related Kaplan companies.

Enrolment Form (Individual Students)

For group enrolments, please contact your Kaplan representative

Kaplan representative information

Partner name/contact person _____ Country _____
E-mail _____ Telephone _____ Fax _____

Student information

Family name _____ First name(s) _____ Male Female
Date of birth (d/m/y) _____ Country of birth _____
Nationality _____ Native language _____
Full address _____ City _____
Postal code _____ Country _____
Telephone (home/mobile) _____ E-mail _____
Language level _____ Type of visa (if applicable) _____
Passport number _____ I would like my documents, including visa invitation, to be sent by courier (documents will otherwise be sent by regular post)

Legal guardian information - applicants aged under 18 are required by law to provide this information

Parent/guardian name _____ Relationship to student _____
Full permanent address _____
Telephone (landline preferred) _____

Center information

Please mark your chosen center by ticking the appropriate box, and also indicate your start date and programme length

London Bushey London Kingston London UCL Bournemouth (Homestay)*
 Bournemouth (Residence)* Salisbury Homestay* Salisbury Residence* Torquay Homestay
 Bath Homestay San Diego Homestay Cairns Homestay

Arrival date _____ Number of nights _____

Please check the center pages for age ranges and available dates. **Stays at UK homestay centers are limited to a maximum of 27 nights (see clause 11 of the Terms and Conditions on page 26 for more details). If you are choosing a UK homestay center and wish to extend beyond 27 nights, please mark a number "2" in the box of the UK center to which you wish to move after 27 nights.**

*If choosing this center, would you like the standard (15 hours per week of lessons) or intensive (21 hours per week of lessons) option? Standard Intensive

Special diet supplement (UK Homestay and Cairns Homestay centers only)

If choosing a UK Homestay or the Cairns Homestay center, please tick if you require your homestay host to provide you with a special diet (charge of 30 GBP / 40 AUD per week applies)

Please give details in the space below of any allergies or special dietary requirements of which your homestay host should be aware.

Residential accommodation supplement (Salisbury Residence only)

If you are coming to the Salisbury Residence center, please tick the following box if you would like upgrade from a shared room with shared bathroom facilities.

Off-campus room with en-suite bathroom facilities (additional 30 GBP per week, available in July only).

Cambridge ESOL exams (UK summer centers only)

Please tick if you would like to take one of the Cambridge ESOL exams and indicate your desired exam date KET PET July 8th July 21st July 29th August 13th

Kaplan airport transfers

Kaplan return transfers are COMPULSORY for students aged under 18 on the day of arrival. If you are aged 18 on the day of arrival, you may opt out by ticking this box

Please specify which type of airport return transfer you require Shared Private taxi (Please send flight details to your Kaplan representative)

In Torquay and Bath, shared transfers take the form of a National Express coach journey and also include a meeting service on arrival at the airport.

If you are coming to Torquay or Bath and would like an additional meeting service as part of your airport transfer on departure, please tick this box (extra charge applies)

Transfers at all other centers include a meeting service on arrival. Further details of airport transfers are available on request from your Kaplan representative.

Unaccompanied minors service

Do you require the unaccompanied minors service on arrival? Yes No On departure? Yes No

Travel and medical insurance

Would you like a Kaplan-arranged travel and medical insurance policy? Yes No (If not, you will need to organise and provide evidence of your own insurance)

Payment

At this time, I wish to pay: The deposit The full fees I am sponsored by: _____

I wish to pay by credit card. **Owing to new financial regulations, we are no longer allowed to receive credit card details by email. If you wish to pay by credit card, please fill in your card details below and send the application by fax. Please contact your Kaplan representative for details of the appropriate fax number.**

Card number (Visa/Mastercard/Amex) _____ Expiry date _____ CCV number (last 3 digits of security code on back of card) _____

Name and address of cardholder _____

Signature of cardholder _____

I enclose a cheque for the amount of _____ payable to Kaplan IC I would like to arrange a bank transfer. Please send me bank transfer details.

Declaration

I confirm I have read, understood and agree to be bound by Kaplan's Terms and Conditions detailed on pages 25 and 26, and Kaplan's Privacy Policy at www.kaplaninternational.com/privacy/

Signature _____ Date _____

Signature of parent/guardian (required if student is under 18 years old) _____ Date _____

Please return the completed form to the Kaplan booking office or to your local Kaplan representative. As a parent/guardian, you also need to complete a Health Declaration and Excursion Waiver Form (USA bookings), or, for UK bookings, an Authorisation of Emergency Medical Treatment form, a Programme Participation Waiver form and a Consent to Travel form. Please request this documentation from the Kaplan booking office or your local Kaplan representative.

Kaplan is proud to be an educational subsidiary of The Washington Post Company.



Worldwide Accreditation and Memberships

UK



Kaplan International Centers in this brochure in the UK are accredited by the British Council.



Kaplan International Centers in this brochure in the UK are members of English UK.

USA



Kaplan International Centers in the USA are accredited by ACCET (Accrediting Council for Continuing Education and Training). Kaplan International Centers are members of NAFSA (Association for International Educators). Several centers also have AAIEP (American Association of Intensive English Programs) and TESOL (Teachers of English to Speakers of Other Languages) memberships.

Australia



Kaplan International Centers in Australia are accredited by the National ELT Accreditation Scheme (NEAS).



Kaplan International Centers in Australia are members of English Australia and ACPET.

New Zealand



Kaplan International Centers in New Zealand are fully accredited by NZQA and are members of English NZ.

Kaplan adult courses

Kaplan offers English language courses, university and exam preparation programmes, and work and study options at over 40 international colleges and centers worldwide. For more information, contact your Kaplan representative.

