

STUDENT RESIDENCE **EDINBURGH**

Canal Point



Canal Point is a brand new residence, located in the center of Edinburgh – just a 20-minute walk or a short bus ride, from the school. With Princes Street just a 15-minute walk away, the residence is ideally placed to make the most of the student experience; it is surrounded by local amenities and student nightlife.

Canal Point consists of cluster flats, which come with well-equipped communal kitchens, broadband internet and well furnished, en-suite bedrooms. There is a widescreen TV in each communal kitchen.

Students benefit from a sociable student lounge, which contains a large flatscreen television, Wi-Fi throughout the residence, on site laundry facilities and 24-hour security.



Canal Point

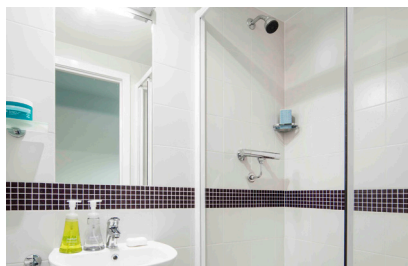


Edinburgh

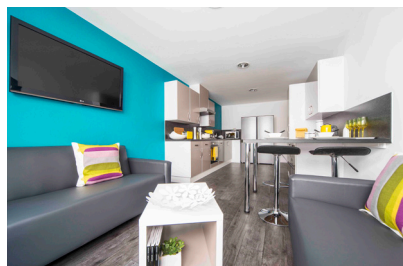
Canal Point
22 West Tollcross
Edinburgh
EH3 9QW

STUDENT RESIDENCE CANAL POINT

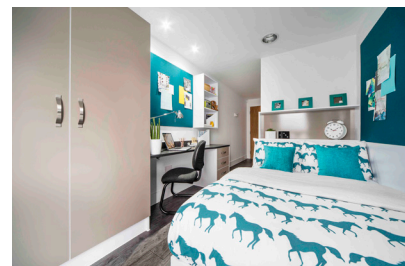
EDINBURGH



En-suite shower room



Shared kitchen/living area



Bedroom

Accommodation details

Type of accommodation

Cluster flats consisting of ensuite study bedrooms, shared kitchen and living space.

Kitchen

There is a fully fitted kitchen for each cluster flat. These contain a microwave, hob with extractor fan, fridge, kettle, and dining area.

Rooms

The rooms are furnished comfortably with a double bed, deluxe en-suite bathroom, storage and study space.

Bathrooms

Each en-suite shower room is modern with a shower, toilet and basin. Students are responsible for keeping their bathroom clean.

Linen and towels

A bed linen pack is provided to each new student at no extra charge. Students are responsible for washing their own linen. Towels are not provided.

Laundry

There are communal laundry facilities on-site. Use of the facilities is subject to charges and students must provide washing powder / detergent themselves.

Student Lounge

Canal Point offers a sociable student lounge, which contains a large flat screen television.

Utilities

Electricity, gas and water are included in the accommodation fee. Electrical current is 240 volts AC (50 cycles) and students from some countries may require a transformer and a plug adaptor.

Internet

20MB internet connection is available in each room.

Security and keys

The residence has CCTV and on-site security, as well as secure bike storage. There is a key fob entry system to rooms and social areas. Inclusive contents insurance is included in the accommodation fee. Students can visit the management suite for help and support during office hours

Visitors

Students can have visitors but overnight guests are not allowed.

Noise and restrictions

Students are requested to be considerate to their neighbours and keep noise levels to a minimum, especially after 10pm.

Arrival

Please give advance notice of your arrival time to Kaplan accommodation staff so that residence coordinators can be made available to assist you with checking in. Arrivals are strictly on Saturday or Sunday between 3pm and 10.30pm. Any arrivals outside these hours must be approved by the school. Departures are strictly before 10am on Saturday.

Deposit

£250 damage deposit to be paid on arrival.

Different room types are available and the pictures are examples only. Information is subject to change.